



Prey
By Detech

Smart Storage System Archimede






Main Features

- Optimized for SMT reels, tubes and trays
- Streamlines the flow of components between warehouse and production
- **Saves floor space:** up to 720 reels stored in 0,45 m²
- **Reduces kitting time:** modular and flexible, offers versatile configuration and application, extending the benefits of automation from simple storage to more complex goods handling operations such as picking, kitting and refilling etc.
- **Time saver:** 5 seconds reel storage time and less than 3 seconds retrieval time
- BoM management and FiFo functions for easy production control and optimization: residual quantity, real time stock situation, warnings, humidity and expiring data tracking
- **Ind. 4.0 ready:** full traceability, easy link with factory MRP software, custom solution for P&P software
- **Sensors and LEDs** on each position for **automatic reels location**
- 7" inches full color touchscreen display and 2D barcode scanner

Contact us for more information or to request a live demonstration at sales@detech-europe.com or call us on **+44 (0)1262 409944**

Detech Europe Ltd

The Farm Office, Model Farm, Atwick Road, Bewholme, East Riding of Yorkshire, YO25 8DT
sales@detech-europe.com detech-europe.com +44(0)1262 409944   

Software Properties

- A single software to manage all the racks/shelves
- Dedicated mobile phone app to follow reel movements along facility
- Easy to use production list creator/import production list from BOM or P&P file
- Presence check of all components necessary for production based on quantity of boards to be assembled
- Selectable reels finder mode:
- Light up simultaneously all the components to be picked up
- Sequential light up according to the chosen criteria (FiFo, expiration date, residual components quantity etc.): display shows the next component to be picked up
- Import of reel's data from generic files (e.g.csv generated from management software, purchase orders, delivery note, etc.)
- Real time printing labels (1D/2D) during reel's import process
- Customers/Suppliers manager function for reels/production lists
- Operator manager function: each action is associated with operator who performed it

Shelves Properties

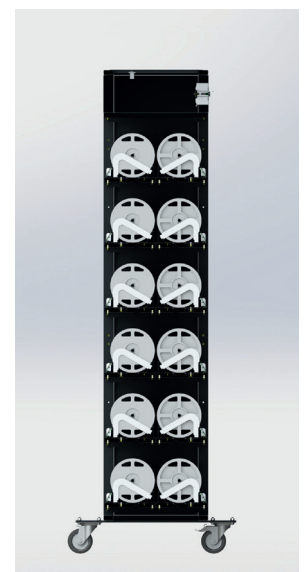
- Full sensorised positions to prevent picking/storage errors. RGB Leds show status for each position
- Real time detection of picking errors
- Touchscreen display for local operations and view reels info
- Barcode scanner
- System can be mounted on wheels and equipped with battery to be used close to P&P/feeders. Reduces changeover/setup time and errors
- Ultra-fast "Scan&Place" mode: if the reel's code, once scanned, is correctly recognized and present in the DB, simply insert the reel in any empty position
- Space saver: reels can be placed in any empty housing suitable for their sizes.

Options Available

- 7" reels shelf (up to 60 positions). Double side
- 10" reels shelf (up to 60 positions). Single side or double side
- 13" reels shelf (up to 30 positions). Single side or double side
- 15" reels shelf (up to 30 positions). Single side only
- Trays/bulk components shelf (15 different locations). Single side only
- Tubes/bulk components shelf (15 different locations). Single side only

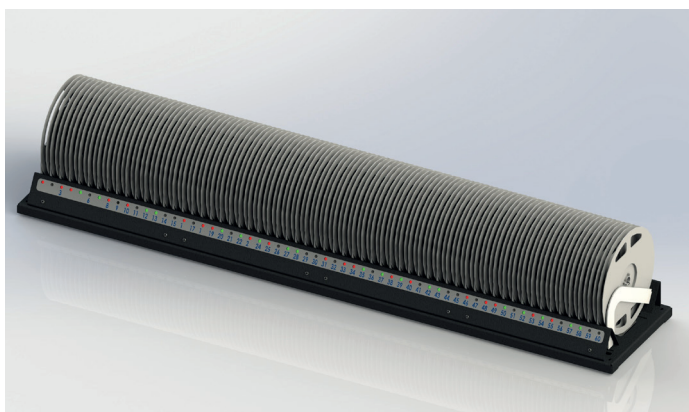
Front & Lateral Section

Double side loading/retrieval feature to optimize space in the facility. Up to 720 reels stored in 0,45 m²



Make Smart Your Existing Furnitures

Use Archimede shelves together with dedicated control pack in your own storage system to get smart features.



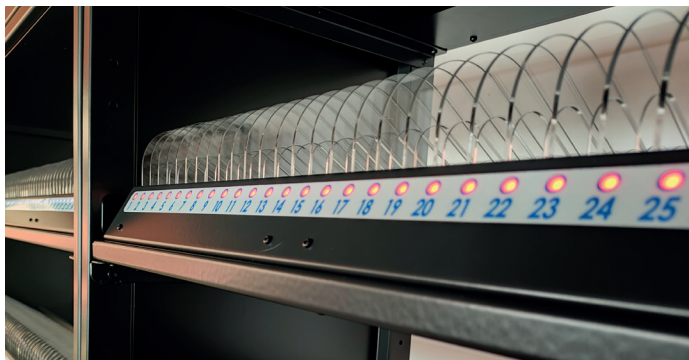
Shelf for Trays, Tubes or Bulk

15 sensed locations to store trays, tubes or bulk components. Each location can handle different components without errors thanks to barcode scanner.



Shelves for Reels

Each position is sensorised and has a dedicated RGB led. Different operators can simultaneously find their reels identified by different led colors.



Save Floor Space for New Projects

Improve management of floor space: thanks to Archimede you can create new areas to be used for production or for other functions.

Find the components necessary for production easily, quickly and without errors.

Easy and Quick

Getting Started

1. Import components from your orders or other generic files
2. Create and print labels (barcode, QR code)

Storage

1. Use the scanner and place the reel in one of the spaces identified by the LEDs
2. Software will verify that all the reels in the list have been inserted.

Picking

1. Create the list (or import it from files as BoM or P&P file) of components to be taken
2. Choose the picking criteria (FiFo, expiring dates, etc.)
3. Take the reels from the positions indicated by LEDs.

Prepare for Assembly

Identify reels by mobile app just before inserting them into the pick & place feeders.