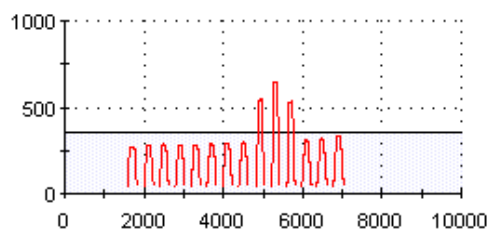
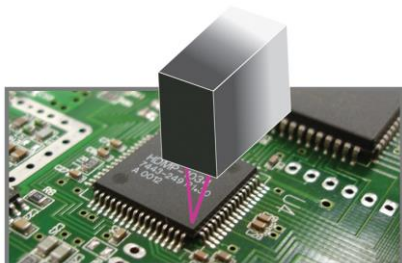


# TECHNOLOGICALLY ADVANCED

## MV-6E 2D AOI Series

# MIRTEC

- High-Speed, High-Performance Five Camera In-Line AOI Machine
- Exclusive **TEN MEGA PIXEL** Camera Technology
- 9.8 Micron / Pixel Precision Telecentric Compound Lens Design
- Integrated Ten Mega Pixel **SIDE-VIEWER®** Camera System
- Precision Closed Loop AC Servo Drive Motor System
- Extremely Simple Programming and Operation



- Integrated **INTELLI-SCAN®** Laser Inspection System
- Superior Lifted Lead Detection For Gull Wing Devices
- Four Point Height Measurement For Co-Planarity Testing of BGA and CSP Devices
- Enhanced 3D Solder Paste Measurement Capability



[www.mirtec.com](http://www.mirtec.com)